

# Product Specification

## Reference Standards

产品货号 / Cat No. SL8650

中文名称 / Chinese Name 叶黄素

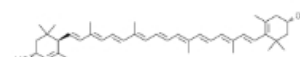
英文名称 / English Name Lutein

CAS No. 127-40-2

分子式 / Formula  $C_{40}H_{56}O_2$

分子量 / Molecular Wt. 568.87

保存 / Storage  $-20^{\circ}\text{C}$  (sealed storage, away from light)



外观 / Appearance 橘色至红色粉末/Orange to red Powder

纯度 / Purity HPLC $\geq$ 90%

溶解性 / Solubility  $\geq 5\text{mg/mL}$  in Ethylacetate(Use immediately after dissolution)

复检期 / Retest Period 2 years

### Note

本产品溶解后不稳定,建议现用现配/The product is unstable after dissolution. It is recommended that you use it immediately after dissolution.

### References

(See more information on <http://www.solarbio.com/>)

(若有投稿意向, 欢迎关注我公司奖学金计划<http://www.solarbio.com/lw.php>)

(Welcome to follow our company scholarship program <http://www.solarbio.com/lw.php>)