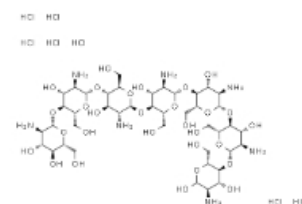


Product Specification

Reference Standards

产品货号 / Cat No.	SC6310
中文名称 / Chinese Name	壳七糖
英文名称 / English Name	Chitoheptaose Heptahydrochloride, Chitoheptaose
CAS No.	68232-35-9
分子式 / Formula	$C_{42}H_{86}Cl_7N_7O_{29}$
分子量 / Molecular Wt.	1401.33, 1401.33
保存 / Storage	2-8°C, 2-8°C (sealed storage, away from light)



外观 / Appearance	粉末/Powder, 粉末/Powder
纯度 / Purity	HPLC≥95%
溶解性 / Solubility	Soluble in Water, Soluble in Water
复检期 / Retest Period	2 years, 2 years

Note

储备液建议分装冻存,避免反复冻融(-20°C,1个月);稀释后的工作液建议现用现配/It is recommended to freeze the stock solution in several small portions to avoid repeated freezing and thawing (- 20 °C, 1 month); The working solution is recommended to be used immediately after dilution

References

(See more information on <http://www.solarbio.com/>)
(若有投稿意向, 欢迎关注我公司奖学金计划<http://www.solarbio.com/lw.php>)
(Welcome to follow our company scholarship program <http://www.solarbio.com/lw.php>)