

Product Specification

Reference Standards

产品货号 / Cat No. SG9440

中文名称 / Chinese Name L-(-)-葡萄糖

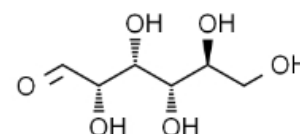
英文名称 / English Name L-(-)-Glucose

CAS No. 921-60-8

分子式 / Formula $C_6H_{12}O_6$

分子量 / Molecular Wt. 180.16

保存 / Storage RT (sealed storage, away from light)



外观 / Appearance 白色至类白色粉末/White to off-white powder

纯度 / Purity HPLC \geq 98%

溶解性 / Solubility \geq 10mg/mL in Water

复检期 / Retest Period 2 years

Note

储备液建议分装冻存,避免反复冻融(-20℃,1个月);稀释后的工作液建议现用现配/It is recommended to freeze the stock solution in several small portions to avoid repeated freezing and thawing (- 20 °C, 1 month); The working solution is recommended to be used immediately after dilution

References

(See more information on <http://www.solarbio.com/>)

(若有投稿意向, 欢迎关注我公司奖学金计划<http://www.solarbio.com/lw.php>)

(Welcome to follow our company scholarship program <http://www.solarbio.com/lw.php>)